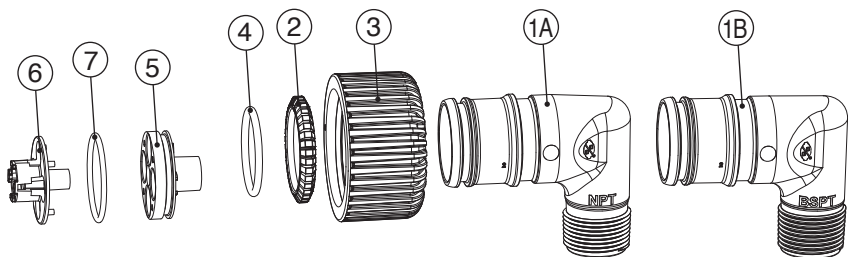


Clack Order No. V4430-04NPT OR V4430-04BSPT
Description: WS15P 1.5 Drain Elbow

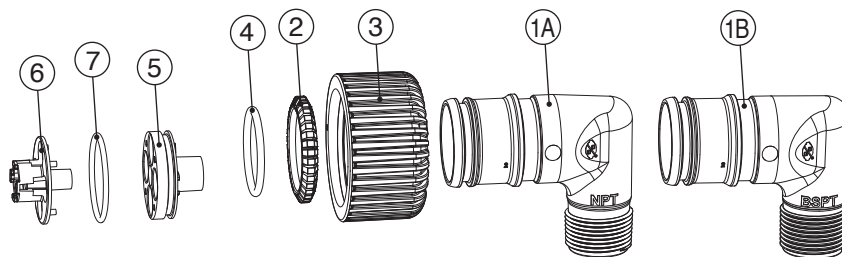
Drawing No.	Order No.	Description	Quantity
1A	V4358	WS15P 1.5 DRAIN ELBOW NPT	1
1B	V4359	WS15P 1.5 DRAIN ELBOW BSPT	1
2	V4345	WS15P SPLIT RING	1
3	V4344	QC NUT 1.5 PLASTIC	1
4	V4367	O-RING 222	1
5	V4351	FLOW CONTROL HOUSING	1
6	V4352	FLOW CONTROL RETAINER	1
7	V4364	O-RING 129	1



Form No. V3215-27 • 10/18/2019

Clack Order No. V4430-04NPT OR V4430-04BSPT
Description: WS15P 1.5 Drain Elbow

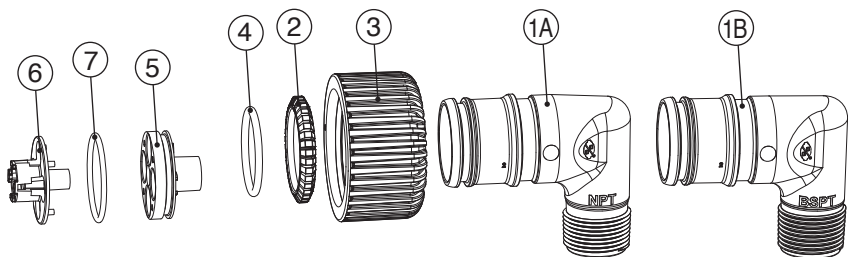
Drawing No.	Order No.	Description	Quantity
1A	V4358	WS15P 1.5 DRAIN ELBOW NPT	1
1B	V4359	WS15P 1.5 DRAIN ELBOW BSPT	1
2	V4345	WS15P SPLIT RING	1
3	V4344	QC NUT 1.5 PLASTIC	1
4	V4367	O-RING 222	1
5	V4351	FLOW CONTROL HOUSING	1
6	V4352	FLOW CONTROL RETAINER	1
7	V4364	O-RING 129	1



Form No. V3215-27 • 10/18/2019

Clack Order No. V4430-04NPT OR V4430-04BSPT
Description: WS15P 1.5 Drain Elbow

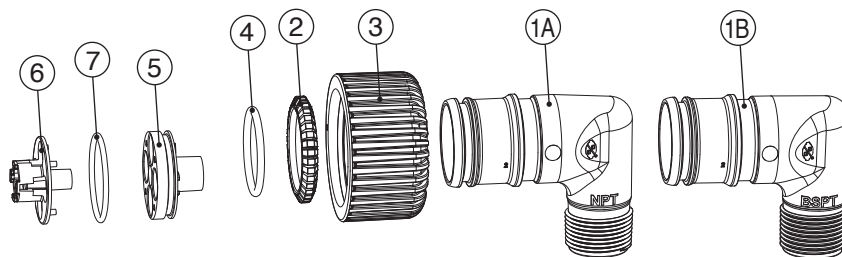
Drawing No.	Order No.	Description	Quantity
1A	V4358	WS15P 1.5 DRAIN ELBOW NPT	1
1B	V4359	WS15P 1.5 DRAIN ELBOW BSPT	1
2	V4345	WS15P SPLIT RING	1
3	V4344	QC NUT 1.5 PLASTIC	1
4	V4367	O-RING 222	1
5	V4351	FLOW CONTROL HOUSING	1
6	V4352	FLOW CONTROL RETAINER	1
7	V4364	O-RING 129	1



Form No. V3215-27 • 10/18/2019

Clack Order No. V4430-04NPT OR V4430-04BSPT
Description: WS15P 1.5 Drain Elbow

Drawing No.	Order No.	Description	Quantity
1A	V4358	WS15P 1.5 DRAIN ELBOW NPT	1
1B	V4359	WS15P 1.5 DRAIN ELBOW BSPT	1
2	V4345	WS15P SPLIT RING	1
3	V4344	QC NUT 1.5 PLASTIC	1
4	V4367	O-RING 222	1
5	V4351	FLOW CONTROL HOUSING	1
6	V4352	FLOW CONTROL RETAINER	1
7	V4364	O-RING 129	1



Form No. V3215-27 • 10/18/2019

Clack Order No. V4430-04NPT OR V4430-04BSPT

Description: WS15P 1.5 Drain Elbow

HYDROCARBONS SUCH AS VASELINE®, PETROLEUM JELLY, KEROSENE, BENZENE, GASOLINE, ETC., WILL DAMAGE PRODUCTS THAT CONTAIN O-RINGS OR PLASTIC COMPONENTS. EXPOSURE TO SUCH HYDROCARBONS MAY CAUSE THE PRODUCTS TO LEAK. DO NOT USE CLACK CONTROL VALVE PRODUCT(S) ON WATER SUPPLIES THAT CONTAIN HYDROCARBONS SUCH AS KEROSENE, BENZENE, GASOLINE, ETC.

Fitting Installation Instructions:

- Installation fittings are designed to accommodate minor plumbing misalignments, but are not designed to support the weight of a system or the plumbing.
- Teflon tape must be used on the fitting threads.
- Slide nut on first, then the split ring and o-ring.
- Hand tighten the nut only.

Form No. V3215-27 • 10/18/2019

Clack Order No. V4430-04NPT OR V4430-04BSPT

Description: WS15P 1.5 Drain Elbow

HYDROCARBONS SUCH AS VASELINE®, PETROLEUM JELLY, KEROSENE, BENZENE, GASOLINE, ETC., WILL DAMAGE PRODUCTS THAT CONTAIN O-RINGS OR PLASTIC COMPONENTS. EXPOSURE TO SUCH HYDROCARBONS MAY CAUSE THE PRODUCTS TO LEAK. DO NOT USE CLACK CONTROL VALVE PRODUCT(S) ON WATER SUPPLIES THAT CONTAIN HYDROCARBONS SUCH AS KEROSENE, BENZENE, GASOLINE, ETC.

Fitting Installation Instructions:

- Installation fittings are designed to accommodate minor plumbing misalignments, but are not designed to support the weight of a system or the plumbing.
- Teflon tape must be used on the fitting threads.
- Slide nut on first, then the split ring and o-ring.
- Hand tighten the nut only.

Form No. V3215-27 • 10/18/2019

Clack Order No. V4430-04NPT OR V4430-04BSPT

Description: WS15P 1.5 Drain Elbow

HYDROCARBONS SUCH AS VASELINE®, PETROLEUM JELLY, KEROSENE, BENZENE, GASOLINE, ETC., WILL DAMAGE PRODUCTS THAT CONTAIN O-RINGS OR PLASTIC COMPONENTS. EXPOSURE TO SUCH HYDROCARBONS MAY CAUSE THE PRODUCTS TO LEAK. DO NOT USE CLACK CONTROL VALVE PRODUCT(S) ON WATER SUPPLIES THAT CONTAIN HYDROCARBONS SUCH AS KEROSENE, BENZENE, GASOLINE, ETC.

Fitting Installation Instructions:

- Installation fittings are designed to accommodate minor plumbing misalignments, but are not designed to support the weight of a system or the plumbing.
- Teflon tape must be used on the fitting threads.
- Slide nut on first, then the split ring and o-ring.
- Hand tighten the nut only.

Form No. V3215-27 • 10/18/2019

Clack Order No. V4430-04NPT OR V4430-04BSPT

Description: WS15P 1.5 Drain Elbow

HYDROCARBONS SUCH AS VASELINE®, PETROLEUM JELLY, KEROSENE, BENZENE, GASOLINE, ETC., WILL DAMAGE PRODUCTS THAT CONTAIN O-RINGS OR PLASTIC COMPONENTS. EXPOSURE TO SUCH HYDROCARBONS MAY CAUSE THE PRODUCTS TO LEAK. DO NOT USE CLACK CONTROL VALVE PRODUCT(S) ON WATER SUPPLIES THAT CONTAIN HYDROCARBONS SUCH AS KEROSENE, BENZENE, GASOLINE, ETC.

Fitting Installation Instructions:

- Installation fittings are designed to accommodate minor plumbing misalignments, but are not designed to support the weight of a system or the plumbing.
- Teflon tape must be used on the fitting threads.
- Slide nut on first, then the split ring and o-ring.
- Hand tighten the nut only.

Form No. V3215-27 • 10/18/2019