



Water Specialist 1" & 1.25" ***No Hard Water Bypass Valve***

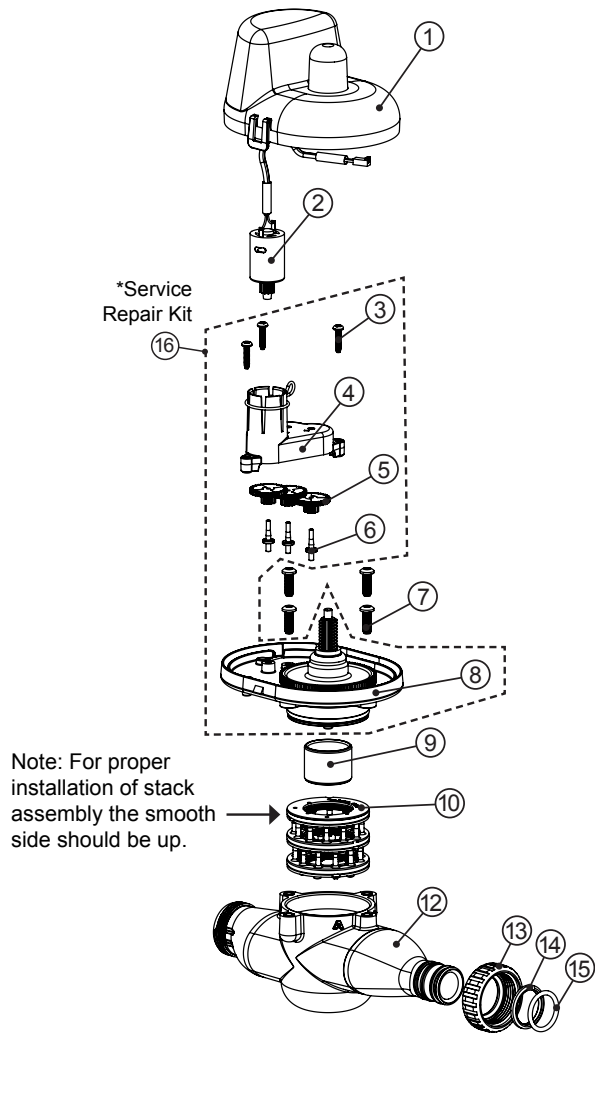


- Eliminates raw water by-pass during regeneration
- Full 1.25" ports for minimal pressure loss
- Low voltage drive assembly controlled by valve's circuit board
- Proven and reliable Clack DC drive assembly
- Utilizes WS1 and WS1.25 Control Valve Fittings
- Flow from Port A to Port B has a C_v factor of 15.5 (3.7 psi drop at 30 gpm)
- Flow from Port B to Port A has a C_v factor of 15.9 (3.6 psi drop at 30 gpm)
- Operating Pressures: 20 PSI Minimum
125 PSI Maximum
- Operating Temperatures: 40°F Minimum
110°F Maximum

No Hard Water Bypass shown for single unit applications with optional accessories.

**Order No. V3070FF • Description: NO HARDWATER BYPASS 1/125 F-F or
Order No. V3070FM • Description: NO HARDWATER BYPASS 1/125 F-M**

Drawing No.	Order No.	Description	Quantity	
			V3070FF	V3070FM
1	V3073	MAV/NOHWBY COVER ASY	1	1
2	V3476	WS MOTOR ASY 8 FT	1	1
3	V3592	SCREW #8-3/4 PHPN T-25 SS	3	3
4	V3262-01	WS1.5&2ALT/2BY REDUCGEARCVRASY	1	1
5	V3110-01	WS1 DRIVE REDUCING GEAR PLAIN	3	3
6	V3264	WS2 BYPASS REDUCTION GEAR AXLE	3	3
7	V3527	SCREW 1/4-20 X 3/4 BHSCS SS	4	4
8	V3072	MAV/NOHWBY 1/125/15 DRIVE ASY	1	1
9	V3506-01	MAV/NOHRD 1/125/15 PISTON	1	1
10	V3074	MAV 1/125/15 STACK ASY	1	1
11	V3521FF	NOHRD WTR BYPASS BODY ASY F-F	1	N/A
12	V3521FM	NOHRD WTR BYPASS BODY ASY F-M	N/A	1
13	V3151	WS1 NUT 1 QC	N/A	1
14	V3150	WS1 SPLIT RING	N/A	1
15	V3105	O-RING 215	N/A	1
*16	V3042	WS1/1.25/1.5 MAV & NHWB SERVICE PACK		



•Operating Pressures:
20 PSI Minimum / 125 PSI Maximum
•Operating Temperatures:
40°F Minimum / 110°F Maximum

